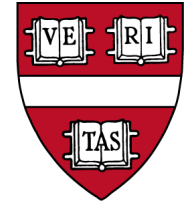
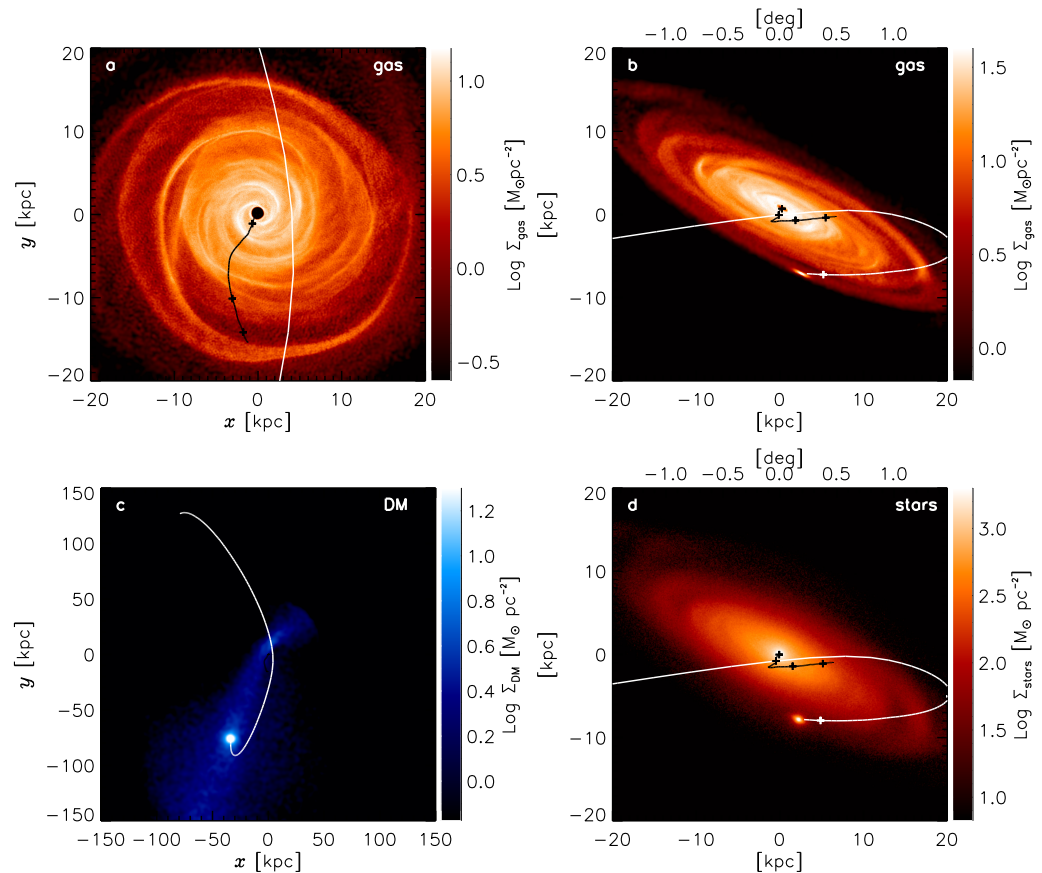
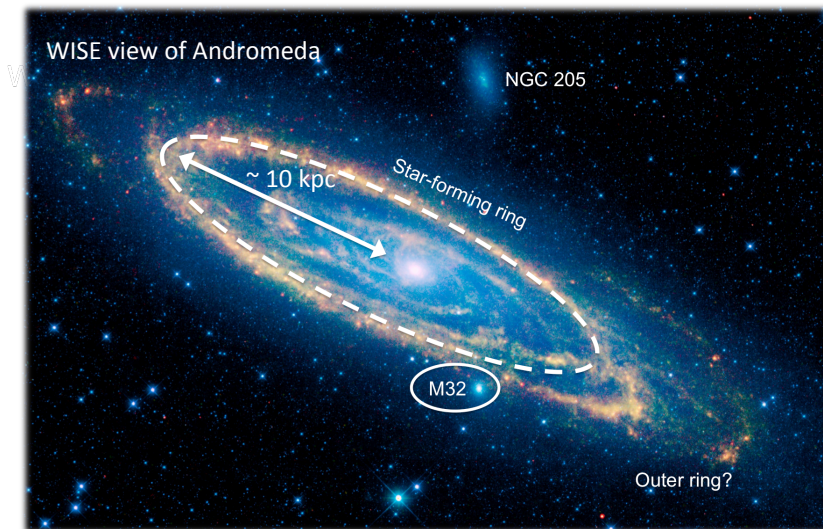


Signatures of the M31-M32 Galactic Collision

Marion Dierickx, Avi Loeb (Harvard CfA) and Laura Blecha (U. Maryland) 2014 ApJL 788:L36



Andromeda's mysterious ring-like structure
and
M32's unusual compact elliptical morphology...



EGEE conference, Sep 2014

... successfully replicated with the first self-consistent
model of M32's passage through Andromeda's disk.