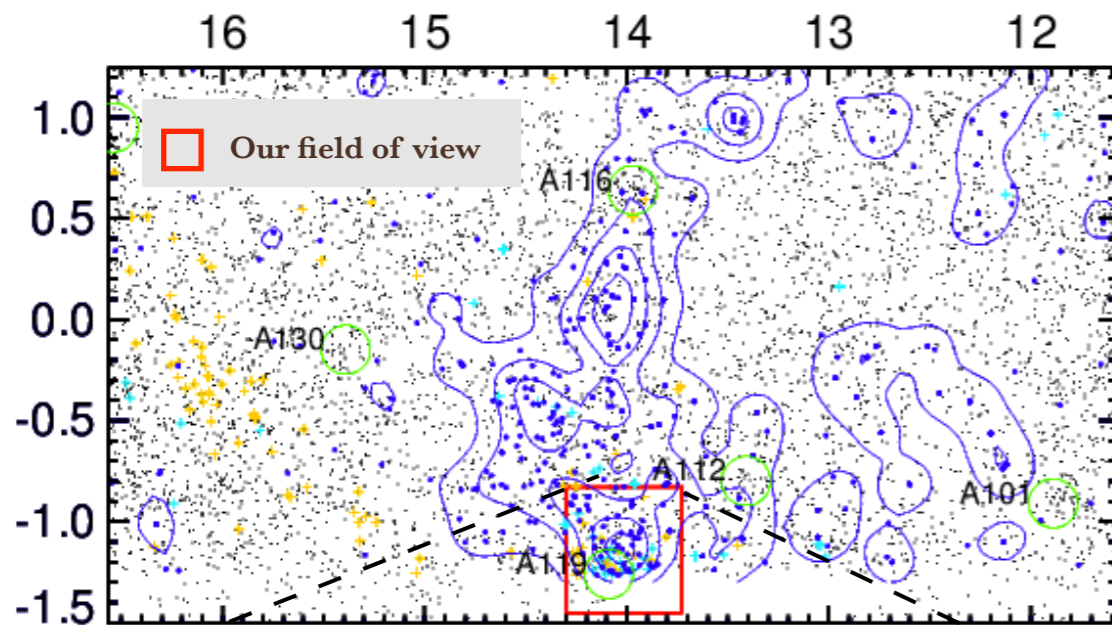
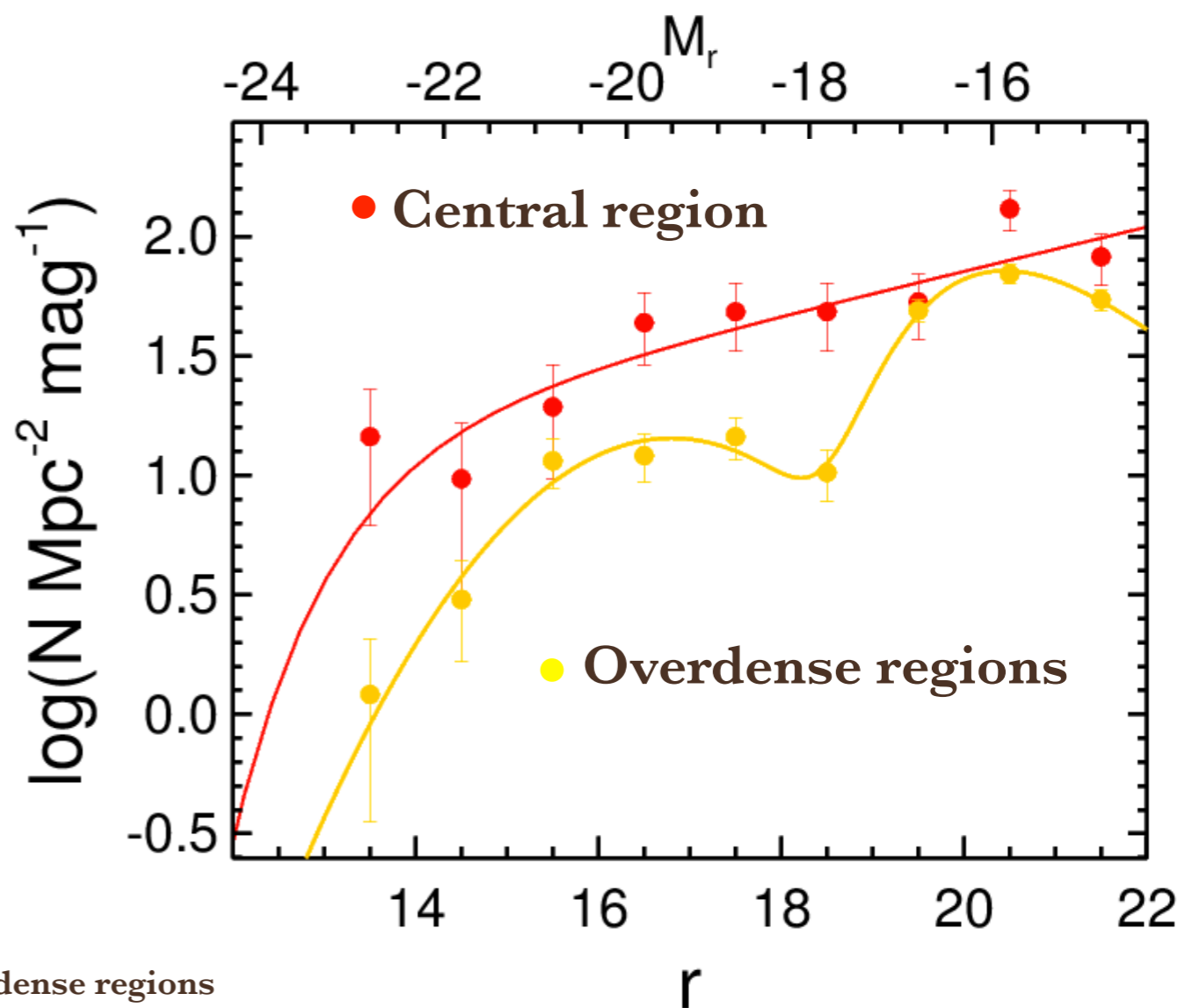
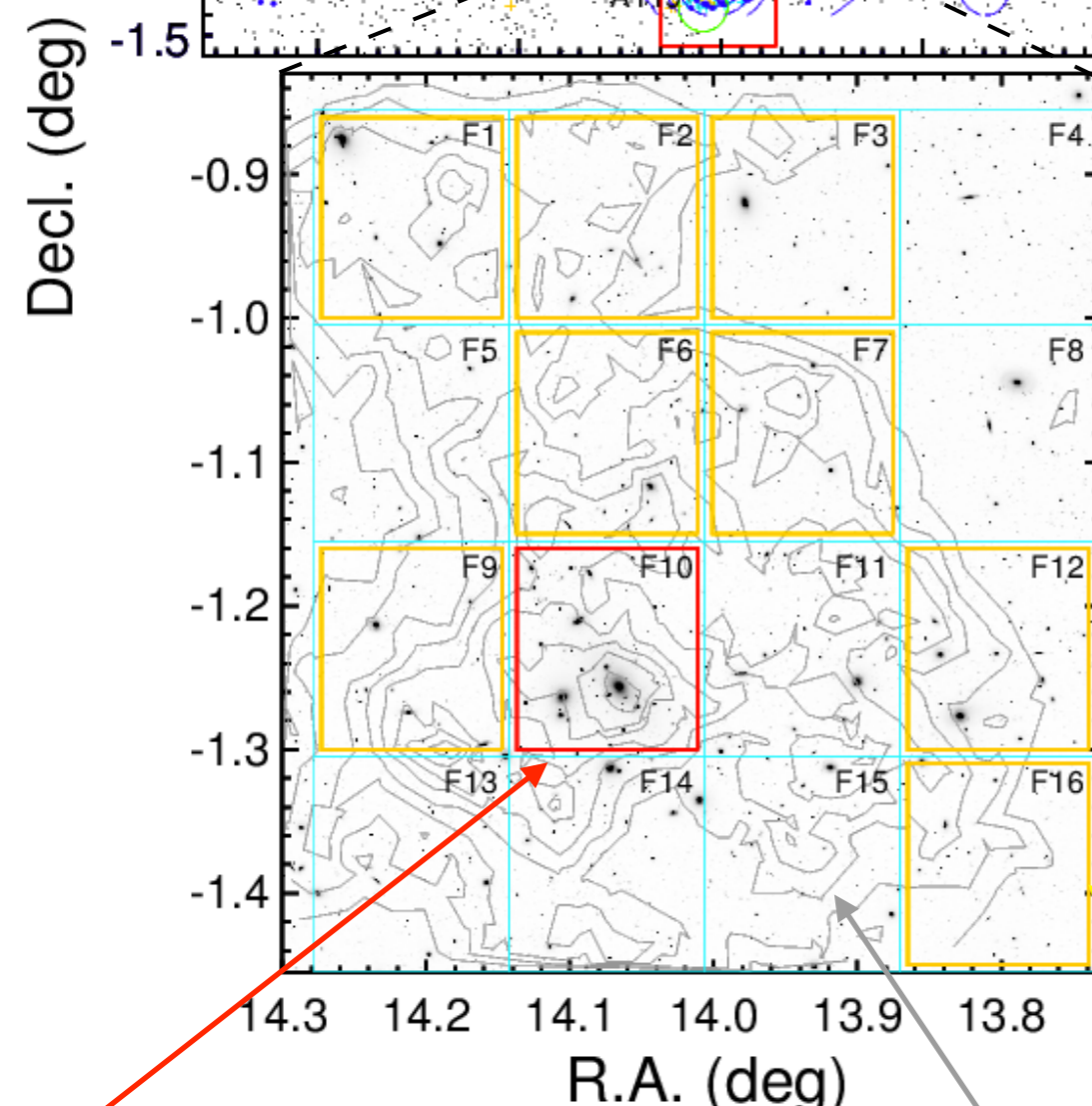


Galaxy Luminosity Function and Mass Assembly of the Abell 119 Cluster

Youngdae Lee et al.



- ✓ u, g, r images are taken by the Blanco 4-m telescope
- ✓ Members are determined using radial velocity, color-magnitude diagram, and scaling relation.



Central region

Overdense regions

Grey contour : Local projected galaxy density