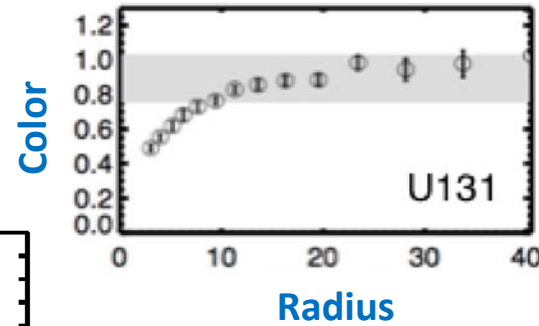
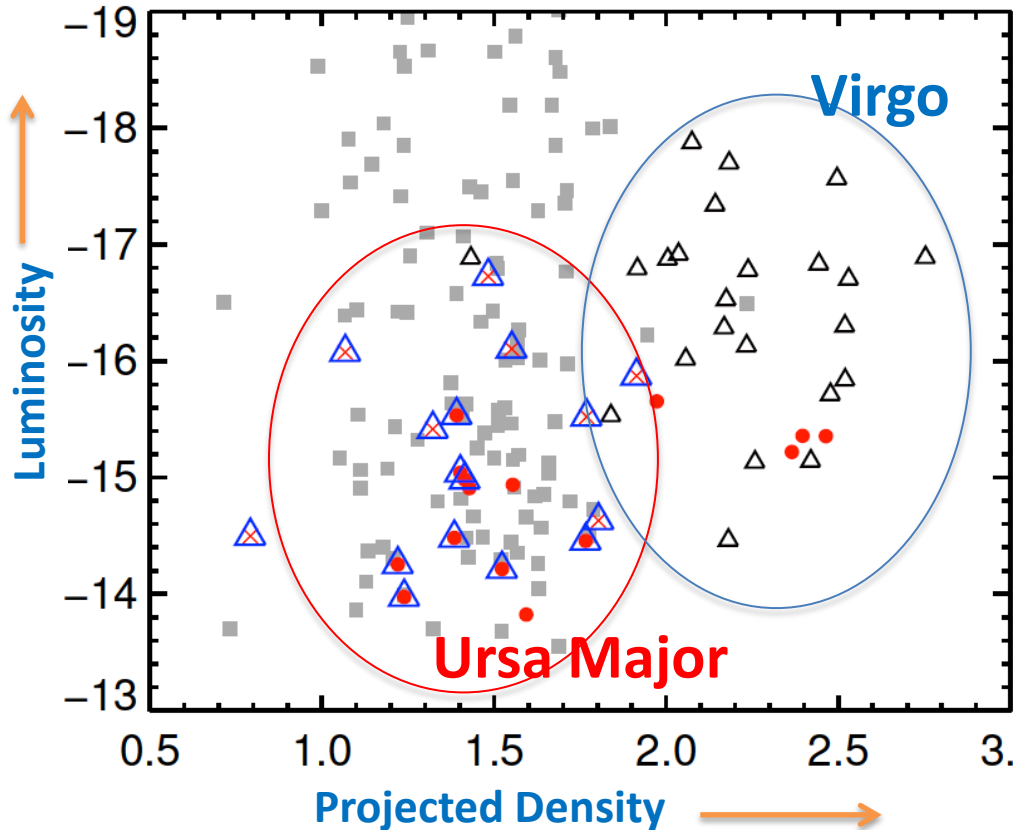


Properties of the Early-type Dwarf Galaxies in the Ursa Major ~~Cluster~~ Group

- ✓ Group environment
- ✓ New catalog from the SDSS and NED data



- ✓ ~ 70% of early-type dwarfs have blue centers (cf. ~ 5% for Virgo cluster)
- ✓ Transitional galaxies with hints of ongoing or recent star-formation in the centers