

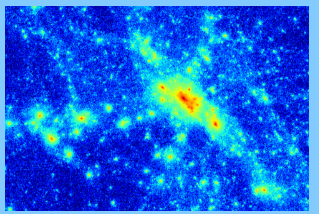
The imprint of dark matter on the size and velocity dispersion evolution of central and satellite galaxies



Lorenzo Posti et al. 2014, MNRAS, 440, 610

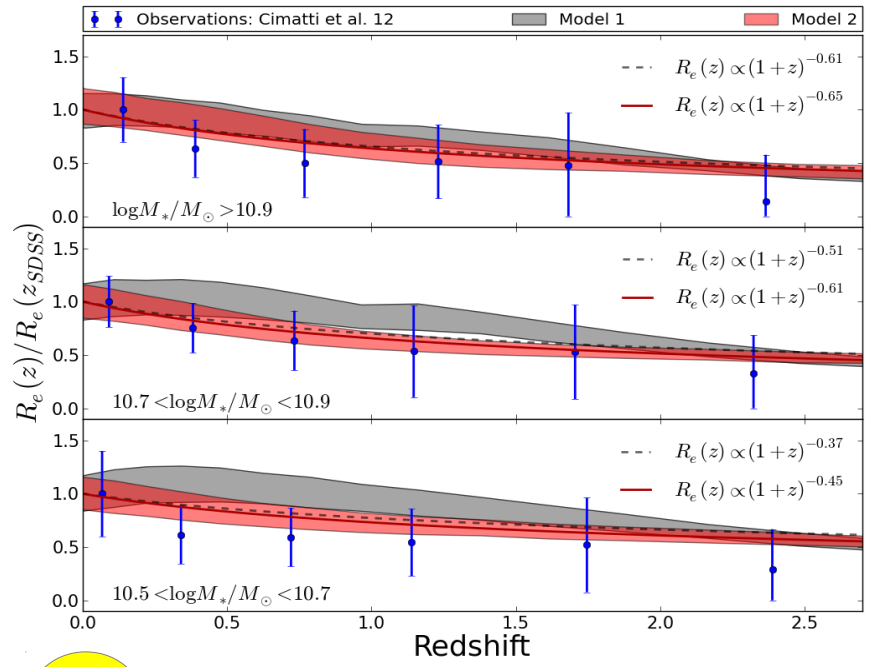
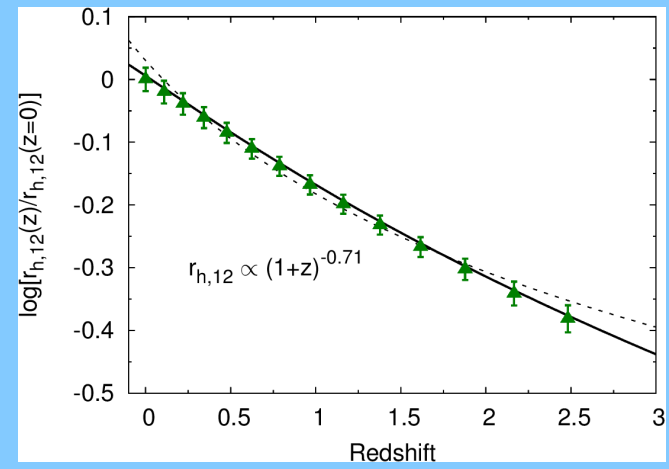
1

N-body simulation



2

Halo evolution: similar to ETGs'



4

Indication of stronger evolution for centrals w.r.t. satellites

3

Dark matter halos do account for ETG size (and σ) evolution up to $z \sim 2$

