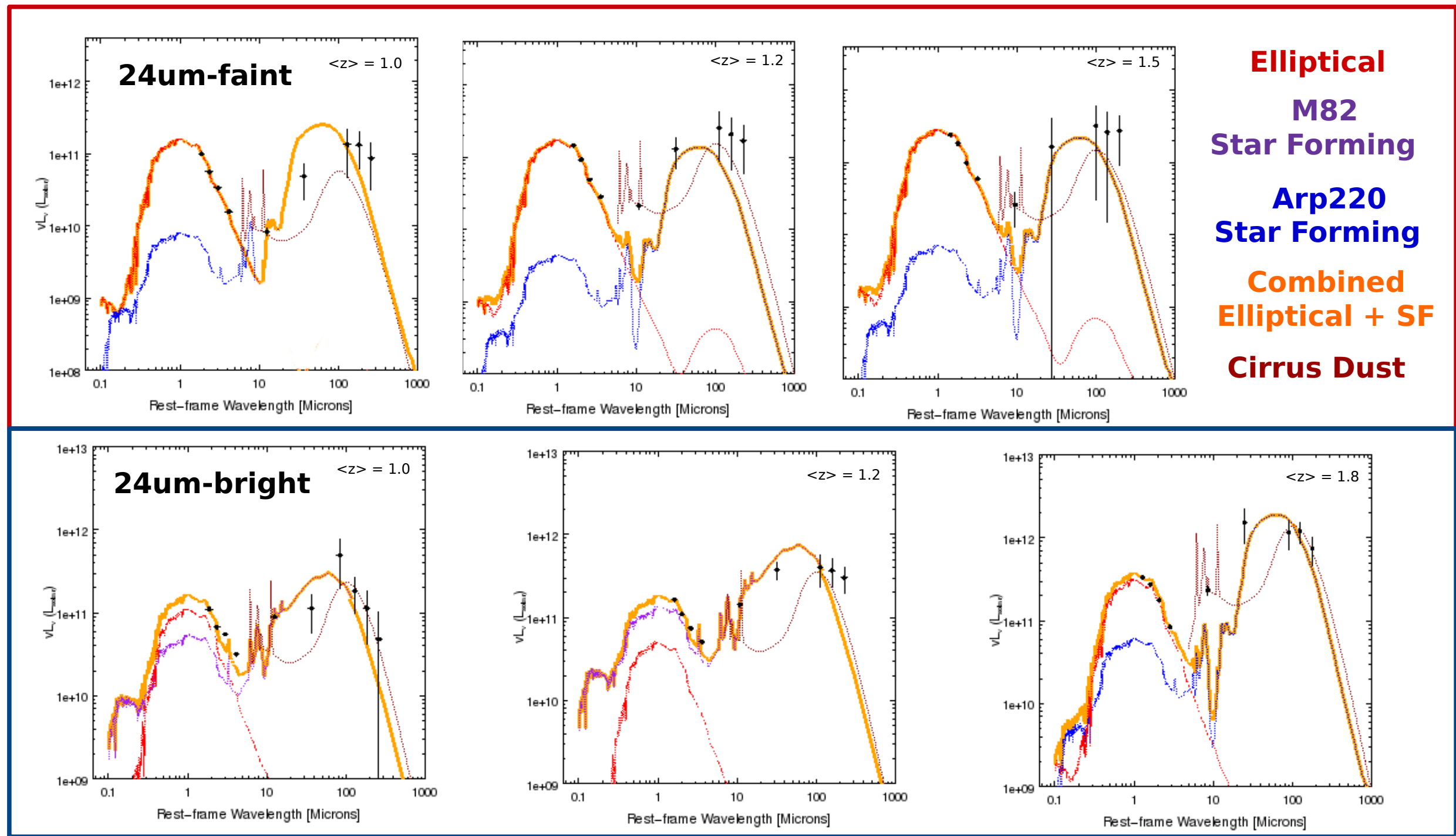


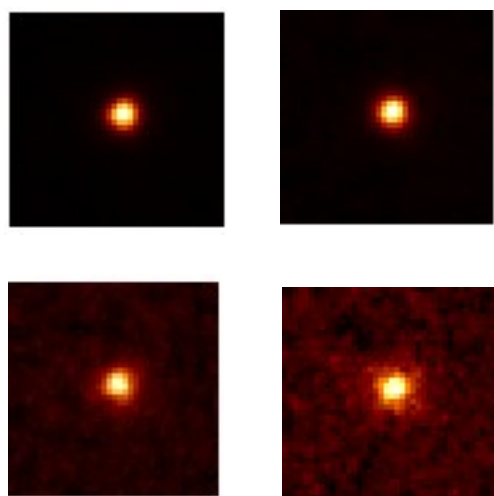
The Infrared Spectral Energy Distribution of Brightest Cluster Galaxies

Bonaventura, N., T. M.A. Webb, A. Noble, A. Muzzin, C. Lidman, G. Wilson, and the SpARCS Team

We stack the fluxes of 508 BCGs in flux and redshift bins, per Spitzer and Herschel SPIRE IR waveband...



...to find a main-sequence 'faint' and starbursting 'bright' population, suggesting BCG mass build-up from gas-rich star formation in addition to 'dry' mergers predicted by theory.



... to generate broadband stacked infrared flux SEDs from which to determine the dominant source of IR emission and the physical processes shaping BCG evolution...

