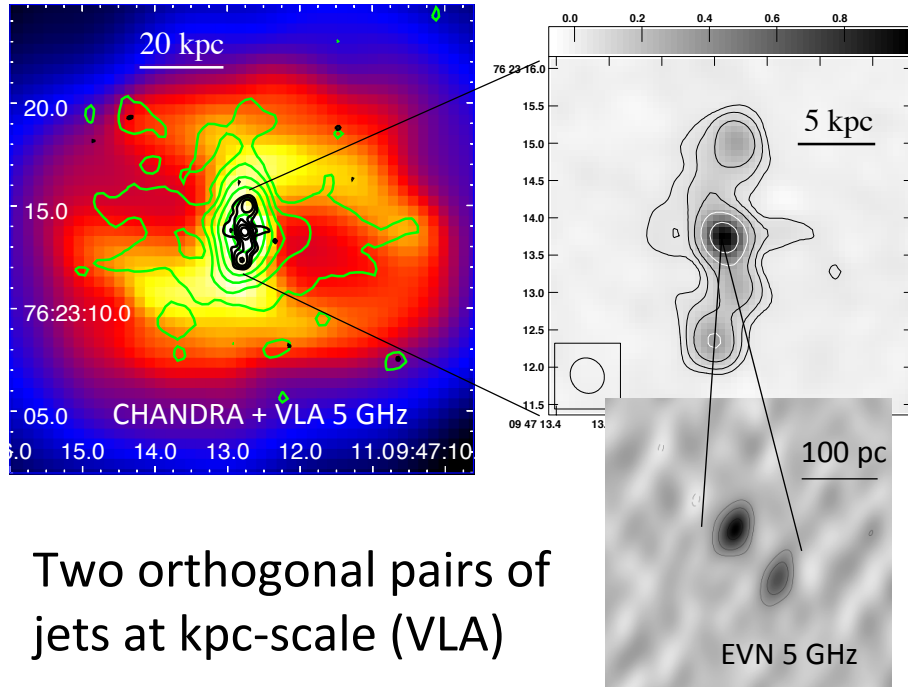


Twin SMBH candidates in RBS 797's BCG and in A2626's dumbbell cD galaxy

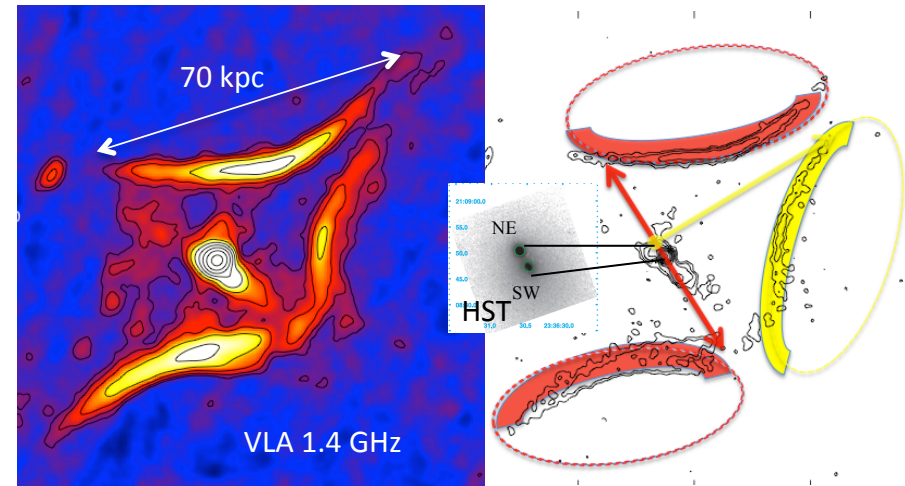


Two orthogonal pairs of jets at kpc-scale (VLA)

Two compact radio components separated by 77 pc (VLBI)

Possible scenarios:

- (1) Nuclei of **two active SMBHs**
- (2) Core-jet of primary SMBH



“Kite” radio source unlike typical bubbles/cavities in cool core clusters

Three symmetric radio arcs (VLA)

Possible scenarios:

- (1) **Two pairs of precessing jets**, one pair for each of the two cD nuclei
- (2) Cluster relics (shock accelerated)

Myriam Gitti (University of Bologna)